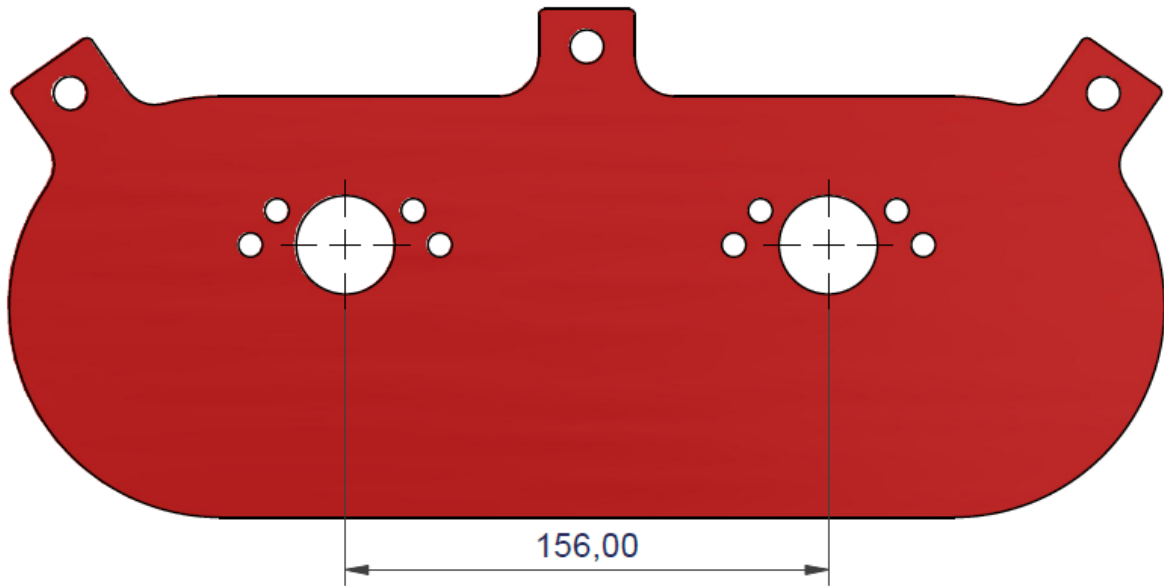




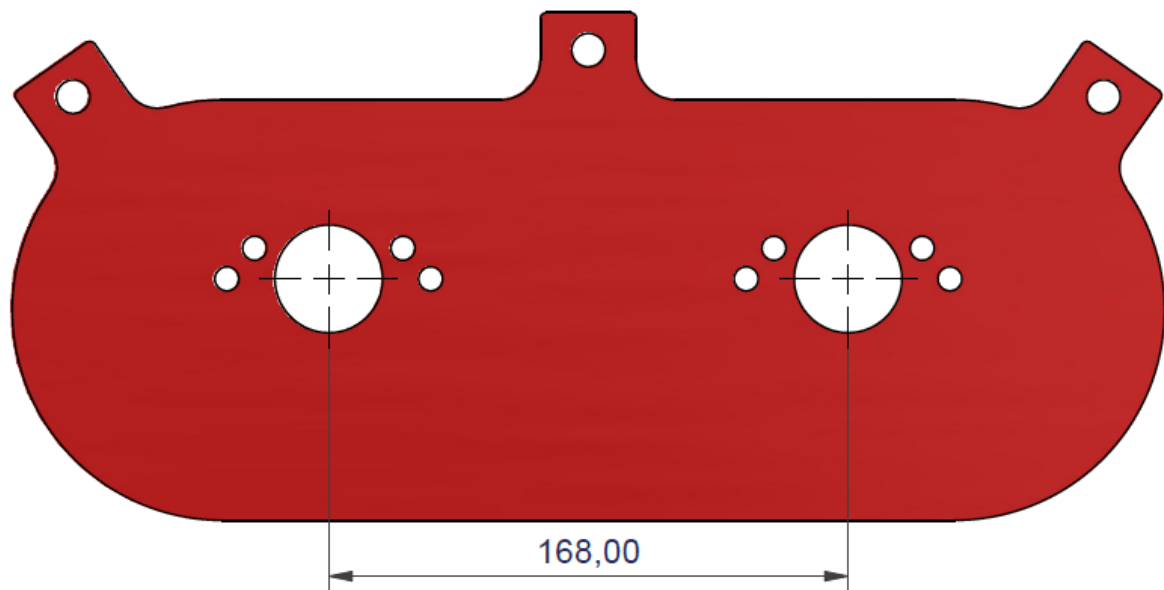
Multi Carburettor Filter Baseplates

Baseplates - JC40

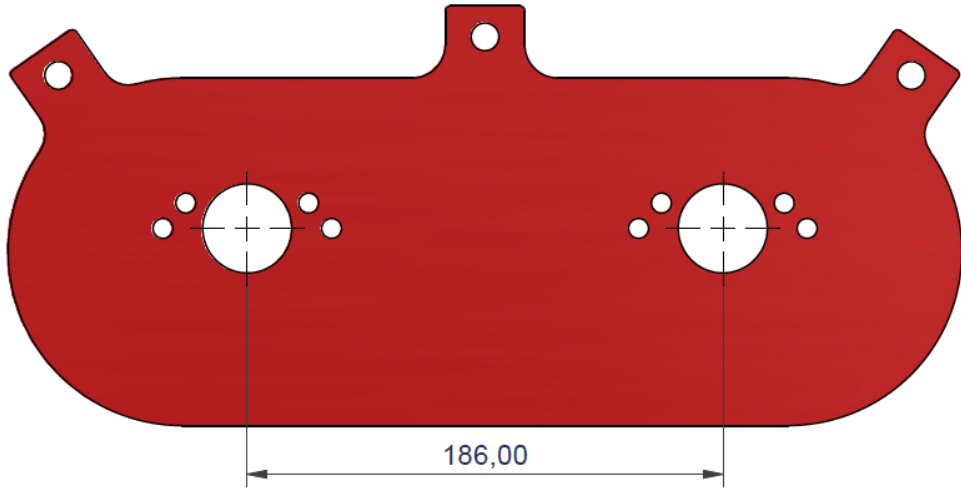
Part No	Carburettors - Engine/Manifold Fitting	Centres (mm)
2JC40	(2x) SU, HS2 BL/Rover 'A' Series (etc)	156



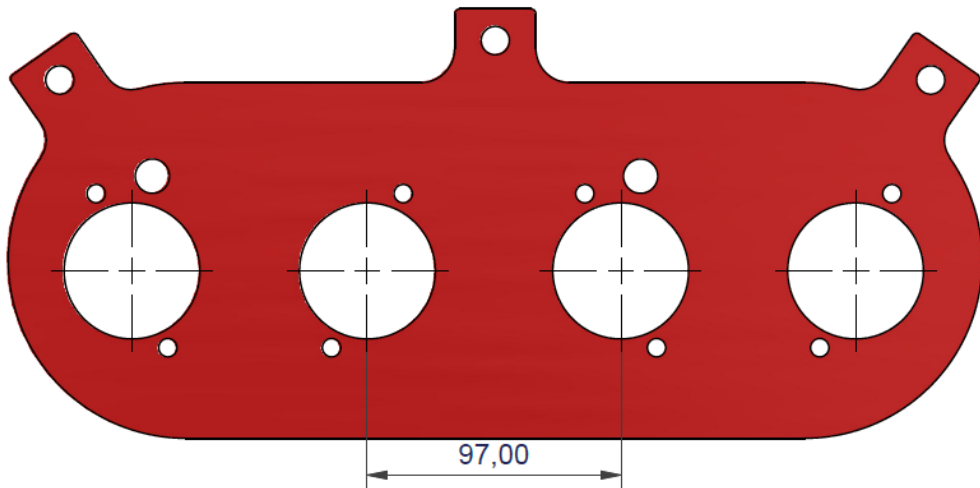
4JC40	(2x) SU, HS4 Triumph/BL 1500 (etc)	168
-------	---------------------------------------	-----



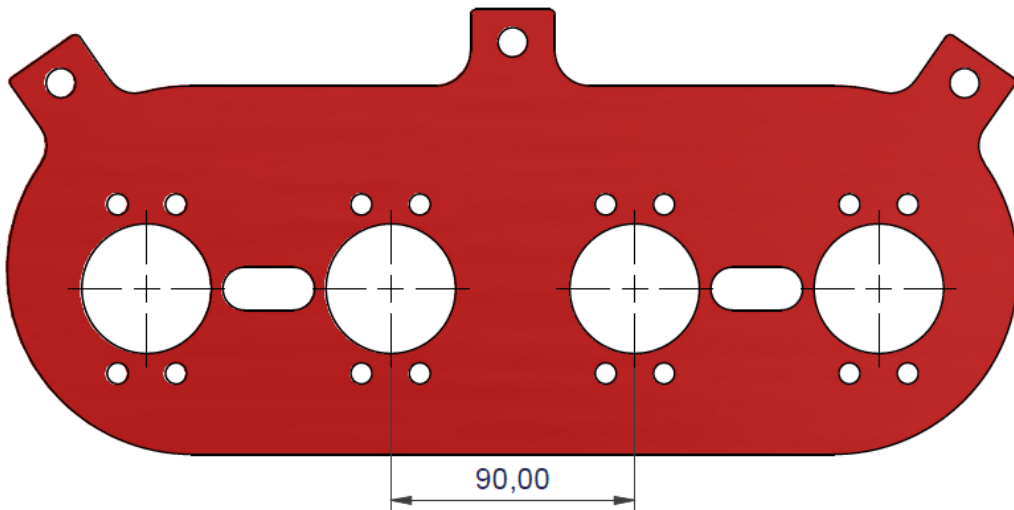
Part No	Carburetors - Engine/Manifold Fitting	Centres (mm)
5JC40	(2x) SU, HS4 MGB 1800 (etc)	186



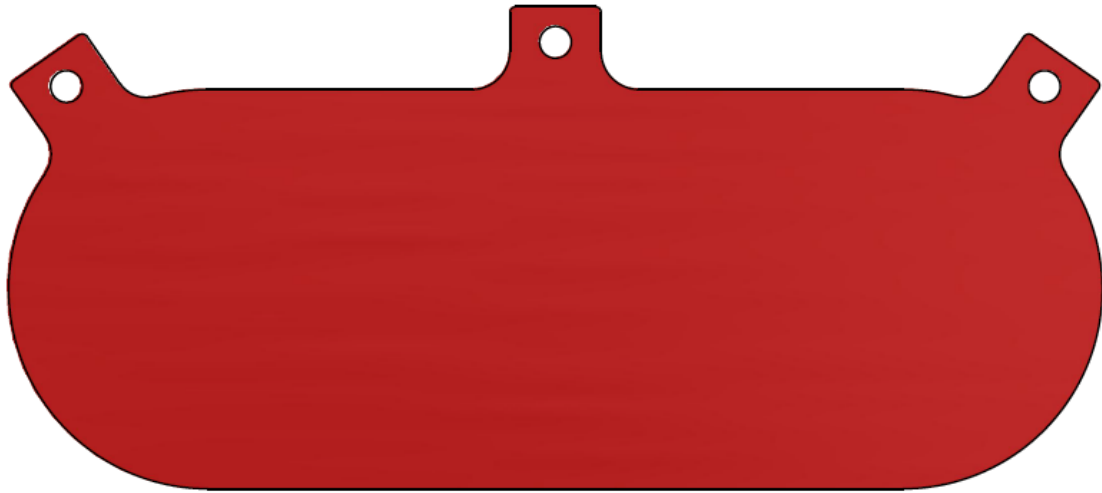
6JC40	(2x) Weber, DCOE Hillman Imp, Vauxhall 2300/2000	97
-------	---	----



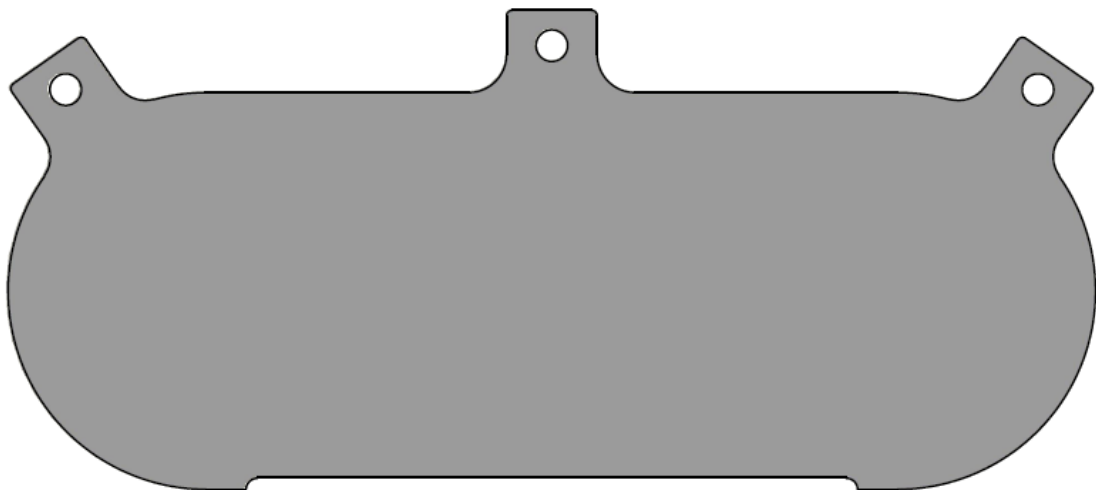
7JC40	(2x) Weber, IDF Fiat Twin Cam, Rover V8	90
-------	--	----



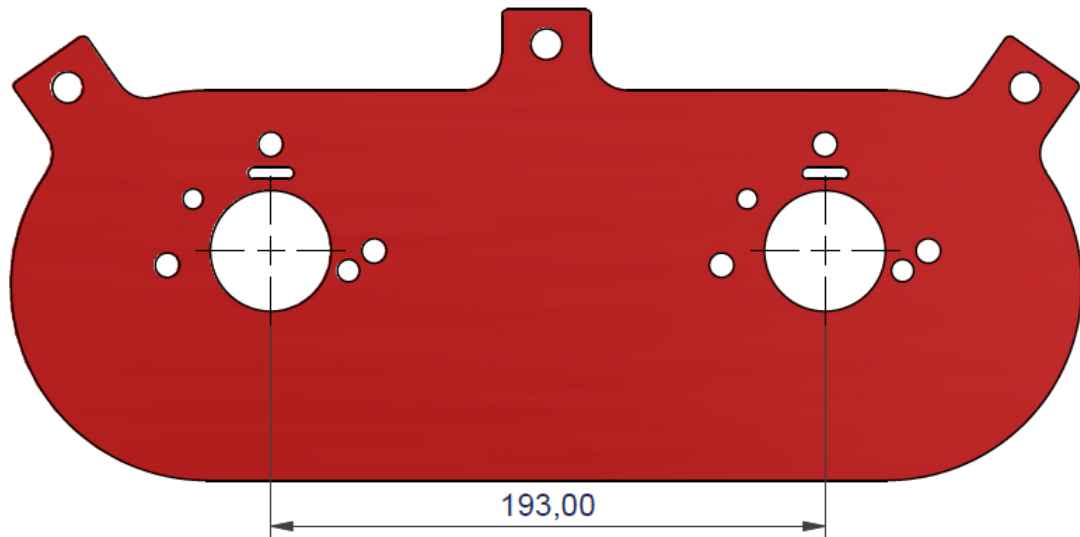
Part No	Carburetors - Engine/Manifold Fitting	Centres (mm)
8JC40	Blank Baseplate Painted Steel	N/A



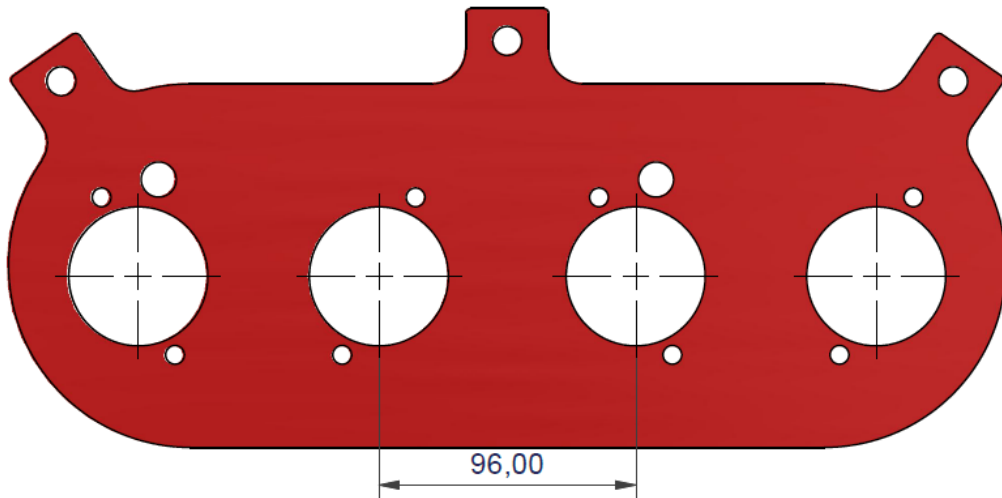
9JC40	Blank Baseplate Aluminium	N/A
-------	------------------------------	-----



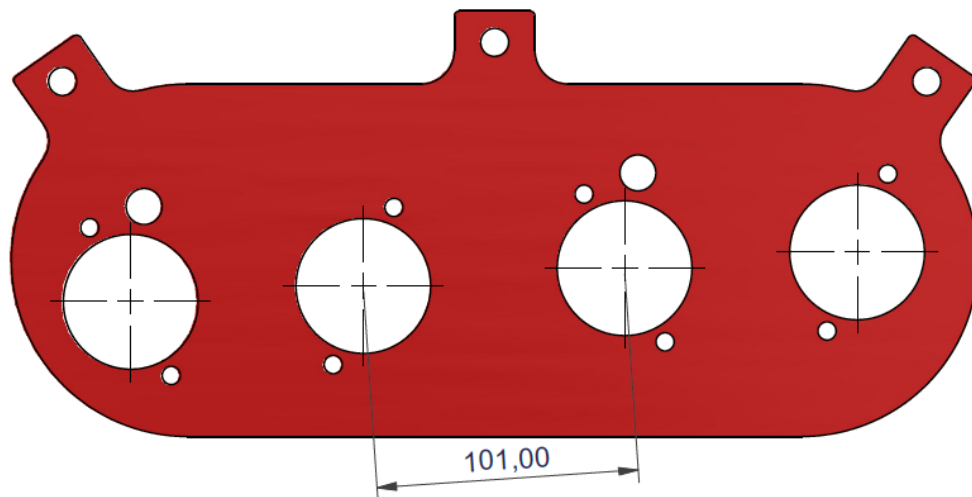
12JC40	(2x) Stromberg 175CD Lotus Elan (Needs Bonnet with Bulge)	193
--------	--	-----



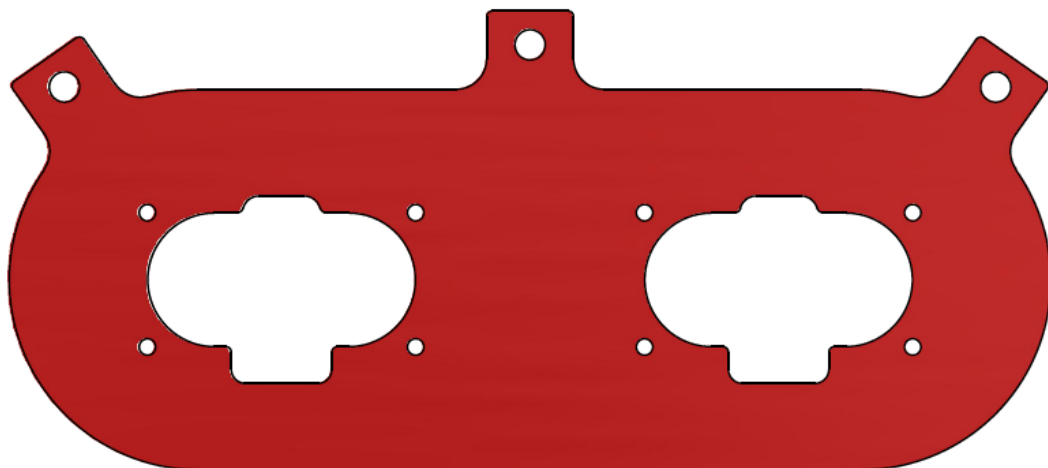
Part No	Carburetors - Engine/Manifold Fitting	Centres (mm)
13JC40	(2x) Weber DCOE GM Vauxhall/Opel/Lotus 16v	96



14JC40	(2x) Weber DCOE Lotus Elan (Needs Bonnet with Bulge)	101
--------	---	-----



15JC40	(2x) Weber DCNF Ford 1.6 CVH (>1997)	N/A
--------	---	-----



Megaflow Custom Laser Cut Baseplate Profiles

Can't find an off-shelf baseplate to suit your application?

We offer a Laser Cutting service for custom profiles, where an off-shelf solution cannot be found. With the below information from you we can create a direct fit baseplate specific to your vehicle!

How to specify custom ITG Megaflow Baseplates...

For Weber DCOE Carbs, Throttle Bodies or similar, we require the brand/model of the setup. From this information we can determine your port spacings which are in most cases 90mm set by the manufacturer of the inlet.

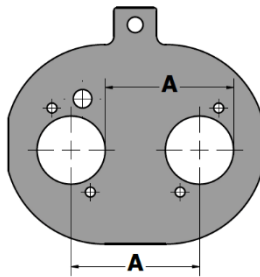
E.g.- Weber 45 DCOE

Jenvey 48 ITB's

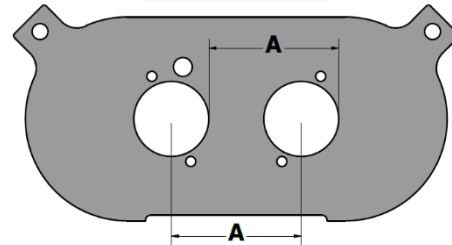
SU-HS6

We then need to know the centre-to-centre distance (**A**) for the main air intakes. This can be measured directly from the centres or if easier, from edge-edge of the main opening's as shown in the diagrams.

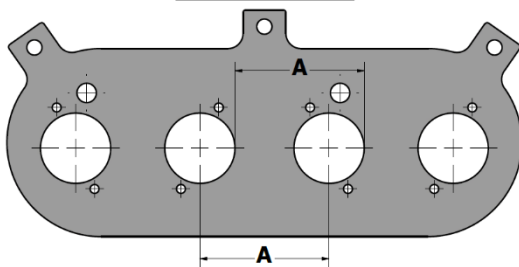
JC20 Baseplate



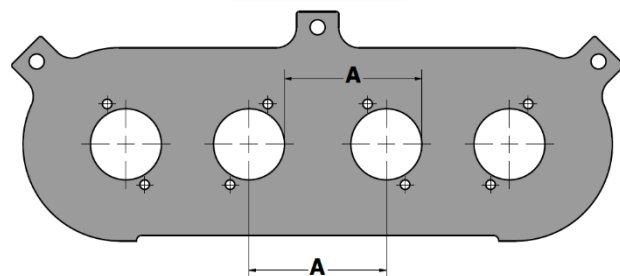
JC30 Baseplate



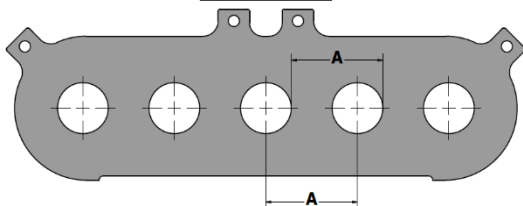
JC40 Baseplate



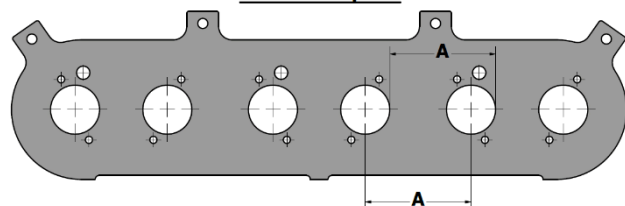
JC50 Baseplate



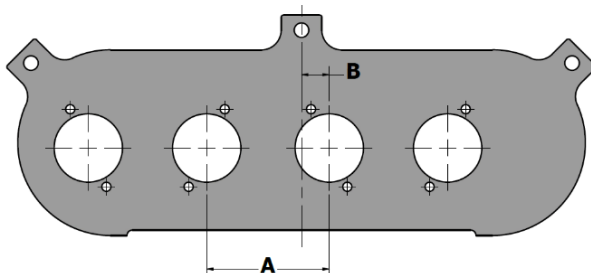
JC55 Baseplate



JC100 Baseplate



How to specify custom offset Megaflow Baseplates...



Profiles are normally centralised, however where required we can offset the profile to clear bodywork. We will work with you to find the ideal offset value (RH or LH) to ensure there will be no internal filter clearance issues, such as airhorns touching internal filter support cages (**B**).

Get in touch with our Technical team for a quote today – technical@itgairfilters.com